

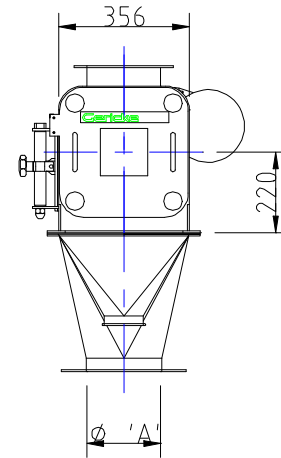
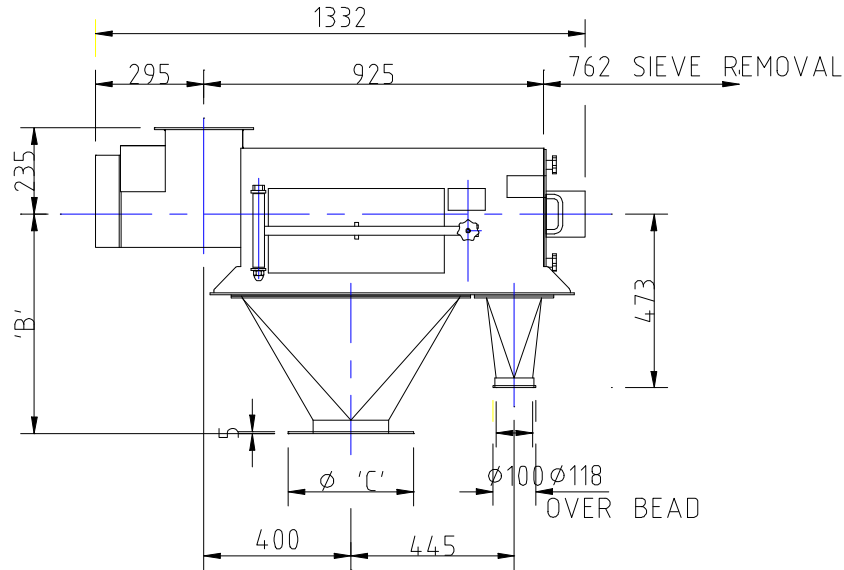
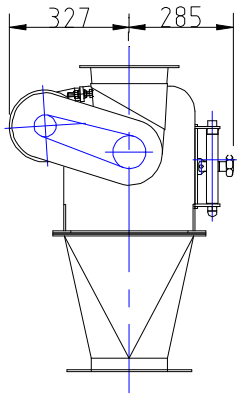
1

2

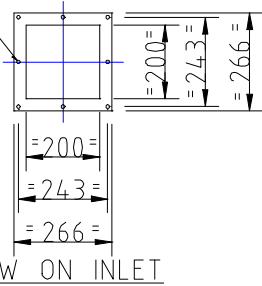
3

4

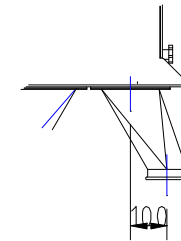
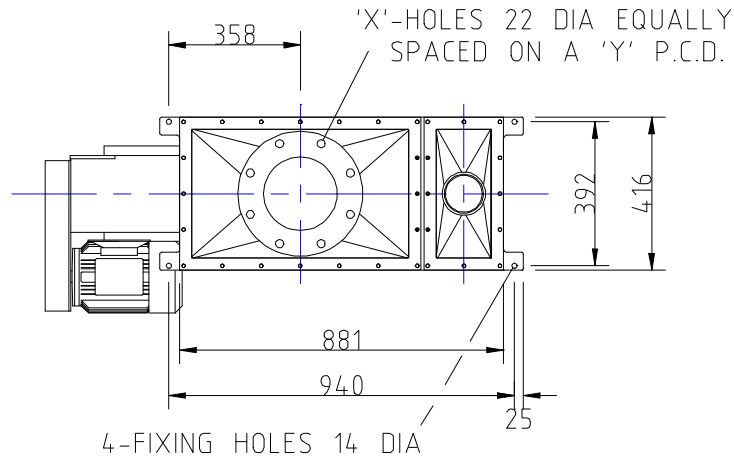
5



8-HOLES $\phi 10$



VIEW ON INLET



ALTERNATIVE ANGLED OVERSIZE OUTLET

WHEN ORDERING PLEASE SPECIFY YOUR PREFERRED HOPPER SIZE

$\phi 'A'$	'B'	$\phi 'C'$	'X'	'Y'
150	626	285	8	240
200	601	340	8	295
250	551	395	12	350

IF IN DOUBT ASK

DO NOT SCALE

DRAWN IH 08/01/99

CHK'D

APPR'D

SCALE 1:15

P No E14651

Gericke

PHONE : 061-344-1140 VICTORIA HOUSE
FAX : 061-308-3403 CAVENDISH STREET,
TELEX : 669426 ASHTON UNDER LYNE,
LANCS OL6 7DJ.

THIS DRAWING IS THE PROPERTY OF GERICKE LTD AND MUST NOT BE COPIED, USED OR PASSED TO ANY THIRD PARTY UNLESS WRITTEN PERMISSION IS OBTAINED FROM GERICKE LTD.

CUSTOMER R19

TITLE
CSM722 MK2 WITH HOPPERS AND
'T' BAR DOOR

DRG No E14651/001

REV
SHT A3

REV	REV. NO.	MODIFICATION	DATE	SIG